



Scharlau

The wise choice

Get outstanding results in HPLC with Scharlau

Columns · Vials · Syringe filters · Solvents



HPLC: COLUMNS AND ACCESSORIES

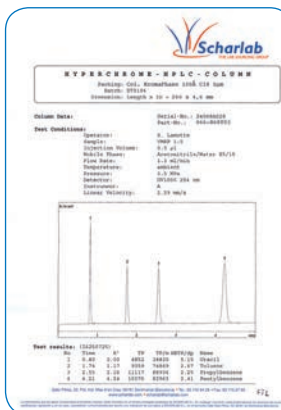
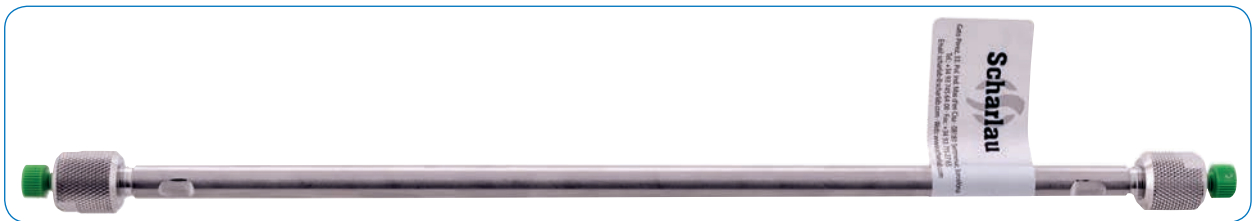
- Columns for HPLC and LC/MS Scharlau, *page 593*
- Columns for HPLC and LC/MS Bischoff, *page 603*
- Columns for UHPLC Bischoff, *page 609*

HPLC: COLUMNS AND ACCESSORIES: Columns for HPLC and LC/MS Scharlau

SCHARLAU

Scharlau columns have been used in Spain for over 30 years for their reliability and reproducibility. Each column is tested after manufacture for efficiency, capacity, selectivity and peak symmetry. The results of this test are shown in the test Chromatogram, which is included with each column. We can pack columns from 2mm to 50mm I.D. having an extensive experience in semi- preparative and preparative columns, in 2mm columns for LC-MS, and also in the standard columns of 4 and 4,6mm I.D. We are especially proud of our own phase columns, the KromaPhase line.

HPLC Scharlau columns KromaPhase SCHARLAU



Control chromatogram

KromaPhase is based on **ultra pure spherical silica of high quality** that provides **high reproducibility and chemical stability** using monofunctional silanes and **total end-capping**. KromaSil can be perfectly substituted for KromaPhase without changing the method. To ensure lot-to-lot reproducibility each lot is subject to specific controls. KromaPhase resolves the vast majority of analytical problems.

For further information, please contact scharlab@scharlab.com

Scharlau syringe filters



HPLC: COLUMNS AND ACCESSORIES

KromaPhase specifications C18:

- USP Art. No.: L1
- Particle sizes: 3, 5, 5, 10µm
- Pore size: 100Å
- Surface Area: 300m²/g
- pH range: 1 to 10
- Carbon Load: 20%
- Pore volume: 0,8ml/g
- Particle size distribution (D10/D90): < 1,6

KromaPhase specifications C8:

- USP Art. No.: L7
- Particle sizes: 3, 5, 5, 10µm
- Pore size: 100Å
- Surface Area: 300m²/g
- pH range: 2 to 9
- Carbon Load: 12%
- Pore volume: 0,8ml/g
- Particle size distribution (D10/D90): < 1,6

KromaPhase specifications SIL:

- USP Art. No.: L13
- Particle sizes: 3, 5, 5, 10µm
- Pore size: 100Å
- Surface Area: 300m²/g
- pH range: 1 to 8
- Pore volume: 0,8ml/g
- Particle size distribution (D10/D90): < 1,6

KromaPhase specifications NH2:

- USP Art. No.: L8
- Particle sizes: 5/10µm
- Pore size: 100Å
- Surface Area: 300m²/g
- pH range: 2 to 8
- Carbon Load: 4,5%
- Pore volume: 0,8ml/g
- Particle size distribution (D10/D90): < 1,6

KromaPhase specifications C4:

- USP Art. No.: L26
- Particle sizes: 5/10µm
- Pore size: 100Å
- Surface Area: 300m²/g
- pH range: 2 to 8
- Carbon Load: 8%
- Pore volume: 0,8ml/g
- Particle size distribution (D10/D90): < 1,6

KromaPhase Columns 2mm I.D. SCHARLAU

Phase	Particle size (µm)	Porus size (Å)	Length (mm)	Ø internal (mm)	Pack (u.)	Art. No.
C18	3,5	100	50	2	1	070B35Y811
C18	5	100	50	2	1	070B35Y803
C8	3,5	100	50	2	1	070B35Y809
C8	5	100	50	2	1	070B35Y802
SIL	3,5	100	50	2	1	070B35Y814
SIL	5	100	50	2	1	070B35Y801
NH2	5	100	50	2	1	070B35Y807
C4	5	100	50	2	1	070B35Y817
C18	3	100	100	2	1	070B36Y812
C18	3,5	100	100	2	1	070B36Y811
C18	5	100	100	2	1	070B36Y803
C8	3,5	100	100	2	1	070B36Y809
C8	5	100	100	2	1	070B36Y802
SIL	3,5	100	100	2	1	070B36Y814
SIL	5	100	100	2	1	070B36Y801
NH2	5	100	100	2	1	070B36Y807
C4	5	100	100	2	1	070B36Y817
C18	3,5	100	125	2	1	070B39Y811
C18	5	100	125	2	1	070B39Y803
C8	3,5	100	125	2	1	070B39Y809
C8	5	100	125	2	1	070B39Y802
SIL	3,5	100	125	2	1	070B39Y814
SIL	5	100	125	2	1	070B39Y801
NH2	5	100	125	2	1	070B39Y807
C4	5	100	125	2	1	070B39Y817
C18	3,5	100	150	2	1	070B40Y811
C18	5	100	150	2	1	070B40Y803
C8	3,5	100	150	2	1	070B40Y809
C8	5	100	150	2	1	070B40Y802
SIL	3,5	100	150	2	1	070B40Y814
SIL	5	100	150	2	1	070B40Y801
NH2	5	100	150	2	1	070B40Y807
C4	5	100	150	2	1	070B40Y817
C18	3,5	100	250	2	1	070B43Y811
C18	5	100	250	2	1	070B43Y803
C8	3,5	100	250	2	1	070B43Y809
C8	5	100	250	2	1	070B43Y802
SIL	3,5	100	250	2	1	070B43Y814
SIL	5	100	250	2	1	070B43Y801
NH2	5	100	250	2	1	070B43Y807
C4	5	100	250	2	1	070B43Y817

→ Continued on the next page

Visit our new web www.scharlab.com

KromaPhase Columns 3mm I.D. SCHARLAU

Phase	Particle size (µm)	Porus size (Å)	Length (mm)	Ø internal (mm)	Pack (u.)	Art. No.
C18	3,5	100	50	3	1	070B58Y811
C18	5	100	50	3	1	070B58Y803
C8	3,5	100	50	3	1	070B58Y809
C8	5	100	50	3	1	070B58Y802
SIL	3,5	100	50	3	1	070B58Y814
SIL	5	100	50	3	1	070B58Y801
NH2	5	100	50	3	1	070B58Y807
C4	5	100	50	3	1	070B58Y817
C18	3,5	100	100	3	1	070B52Y811
C18	5	100	100	3	1	070B52Y803
C8	3,5	100	100	3	1	070B52Y809
C8	5	100	100	3	1	070B52Y802
SIL	3,5	100	100	3	1	070B52Y814
SIL	5	100	100	3	1	070B52Y801
NH2	5	100	100	3	1	070B52Y807
C4	5	100	100	3	1	070B52Y817
C18	3,5	100	125	3	1	070B56Y811
C18	5	100	125	3	1	070B56Y803
C8	3,5	100	125	3	1	070B56Y809
C8	5	100	125	3	1	070B56Y802
SIL	3,5	100	125	3	1	070B56Y814
SIL	5	100	125	3	1	070B56Y801
NH2	5	100	125	3	1	070B56Y807
C4	5	100	125	3	1	070B56Y817
C18	3,5	100	150	3	1	070B53Y811
C18	5	100	150	3	1	070B53Y803
C8	3,5	100	150	3	1	070B53Y809
C8	5	100	150	3	1	070B53Y802
SIL	3,5	100	150	3	1	070B53Y814
SIL	5	100	150	3	1	070B53Y801
NH2	5	100	150	3	1	070B53Y807
C4	5	100	150	3	1	070B53Y817
C18	3,5	100	250	3	1	070B54Y811
C18	5	100	250	3	1	070B54Y803
C8	3,5	100	250	3	1	070B54Y809
C8	5	100	250	3	1	070B54Y802
SIL	3,5	100	250	3	1	070B54Y814
SIL	5	100	250	3	1	070B54Y801
NH2	5	100	250	3	1	070B54Y807
C4	5	100	250	3	1	070B54Y817

→ Continued on the next page

For further information, please contact scharlab@scharlab.com

Scharlau chromatography vials


Scharlau
The wise choice

KromaPhase Columns 4mm I.D. SCHARLAU

Phase	Particle size (µm)	Porus size (Å)	Length (mm)	Ø internal (mm)	Pack (u.)	Art. No.
C18	3,5	100	50	4	1	070-B3Y811
C18	5	100	50	4	1	070-B3Y803
C18	10	100	50	4	1	070-B3Y805
C8	3,5	100	50	4	1	070-B3Y809
C8	5	100	50	4	1	070-B3Y802
C8	10	100	50	4	1	070-B3Y804
SIL	3,5	100	50	4	1	070-B3Y814
SIL	5	100	50	4	1	070-B3Y801
SIL	10	100	50	4	1	070-B3Y810
NH2	5	100	50	4	1	070-B3Y807
C4	5	100	50	4	1	070-B3Y817
C18	3,5	100	100	4	1	070-B1Y811
C18	5	100	100	4	1	070-B1Y803
C18	10	100	100	4	1	070-B1Y805
C8	3,5	100	100	4	1	070-B1Y809
C8	5	100	100	4	1	070-B1Y802
C8	10	100	100	4	1	070-B1Y804
SIL	3,5	100	100	4	1	070-B1Y814
SIL	5	100	100	4	1	070-B1Y801
SIL	10	100	100	4	1	070-B1Y810
NH2	5	100	100	4	1	070-B1Y807
C4	5	100	100	4	1	070-B1Y817
C18	3,5	100	125	4	1	070-B7Y811
C18	5	100	125	4	1	070-B7Y803
C18	10	100	125	4	1	070-B7Y805
C8	3,5	100	125	4	1	070-B7Y809
C8	5	100	125	4	1	070-B7Y802
C8	10	100	125	4	1	070-B7Y804
SIL	3,5	100	125	4	1	070-B7Y814
SIL	5	100	125	4	1	070-B7Y801
SIL	10	100	125	4	1	070-B7Y810
NH2	5	100	125	4	1	070-B7Y807
C4	5	100	125	4	1	070-B7Y817
C18	3,5	100	150	4	1	070-B2Y811
C18	5	100	150	4	1	070-B2Y803
C18	10	100	150	4	1	070-B2Y805
C8	3,5	100	150	4	1	070-B2Y809
C8	5	100	150	4	1	070-B2Y802
C8	10	100	150	4	1	070-B2Y804
SIL	3,5	100	150	4	1	070-B2Y814
SIL	5	100	150	4	1	070-B2Y801
SIL	10	100	150	4	1	070-B2Y810
NH2	5	100	150	4	1	070-B2Y807
C4	5	100	150	4	1	070-B2Y817
C18	3,5	100	250	4	1	070-B6Y811
C18	5	100	250	4	1	070-B6Y803
C18	10	100	250	4	1	070-B6Y805
C8	3,5	100	250	4	1	070-B6Y809
C8	5	100	250	4	1	070-B6Y802
C8	10	100	250	4	1	070-B6Y804
SIL	3,5	100	250	4	1	070-B6Y814
SIL	5	100	250	4	1	070-B6Y801
SIL	10	100	250	4	1	070-B6Y810
NH2	5	100	250	4	1	070-B6Y807
C4	5	100	250	4	1	070-B6Y817

→ Continued on the next page

Visit our new web www.scharlab.com

KromaPhase Columns 4,6mm I.D. SCHARLAU

Phase	Particle size (µm)	Porus size (Å)	Length (mm)	Ø internal (mm)	Pack (u.)	Art. No.
C18	3,5	100	50	4,6	1	066-B3Y811
C18	5	100	50	4,6	1	066-B3Y803
C18	10	100	50	4,6	1	066-B3Y805
C8	3,5	100	50	4,6	1	066-B3Y809
C8	5	100	50	4,6	1	066-B3Y802
C8	10	100	50	4,6	1	066-B3Y804
SIL	3,5	100	50	4,6	1	066-B3Y814
SIL	5	100	50	4,6	1	066-B3Y801
SIL	10	100	50	4,6	1	066-B3Y810
NH2	5	100	50	4,6	1	066-B3Y807
C4	5	100	50	4,6	1	066-B3Y817
C18	3,5	100	100	4,6	1	066-B1Y811
C18	5	100	100	4,6	1	066-B1Y803
C18	10	100	100	4,6	1	066-B1Y805
C8	3,5	100	100	4,6	1	066-B1Y809
C8	5	100	100	4,6	1	066-B1Y802
C8	10	100	100	4,6	1	066-B1Y804
SIL	3,5	100	100	4,6	1	066-B1Y814
SIL	5	100	100	4,6	1	066-B1Y801
SIL	10	100	100	4,6	1	066-B1Y810
NH2	5	100	100	4,6	1	066-B1Y807
C4	5	100	100	4,6	1	066-B1Y817
C18	3,5	100	125	4,6	1	066-B7Y811
C18	5	100	125	4,6	1	066-B7Y803
C18	10	100	125	4,6	1	066-B7Y805
C8	3,5	100	125	4,6	1	066-B7Y809
C8	5	100	125	4,6	1	066-B7Y802
C8	10	100	125	4,6	1	066-B7Y804
SIL	3,5	100	125	4,6	1	066-B7Y814
SIL	5	100	125	4,6	1	066-B7Y801
SIL	10	100	125	4,6	1	066-B7Y810
NH2	5	100	125	4,6	1	066-B7Y807
C4	5	100	125	4,6	1	066-B7Y817
C18	3,5	100	150	4,6	1	066-B2Y811
C18	5	100	150	4,6	1	066-B2Y803
C18	10	100	150	4,6	1	066-B2Y805
C8	3,5	100	150	4,6	1	066-B2Y809
C8	5	100	150	4,6	1	066-B2Y802
C8	10	100	150	4,6	1	066-B2Y804
SIL	3,5	100	150	4,6	1	066-B2Y814
SIL	5	100	150	4,6	1	066-B2Y801
SIL	10	100	150	4,6	1	066-B2Y810
NH2	5	100	150	4,6	1	066-B2Y807
C4	5	100	150	4,6	1	066-B2Y817
C18	3,5	100	250	4,6	1	066-B6Y811
C18	5	100	250	4,6	1	066-B6Y803
C18	10	100	250	4,6	1	066-B6Y805
C8	3,5	100	250	4,6	1	066-B6Y809
C8	5	100	250	4,6	1	066-B6Y802
C8	10	100	250	4,6	1	066-B6Y804
SIL	3,5	100	250	4,6	1	066-B6Y814
SIL	5	100	250	4,6	1	066-B6Y801
SIL	10	100	250	4,6	1	066-B6Y810
NH2	5	100	250	4,6	1	066-B6Y807
C4	5	100	250	4,6	1	066-B6Y817

→ Continued on the next page

For further information, please contact scharlab@scharlab.com

KromaPhase Columns 8mm I.D. SCHARLAU

Phase	Particle size (µm)	Porus size (Å)	Length (mm)	Ø internal (mm)	Pack (u.)	Art. No.
C18	5	100	100	8	1	070B32Y803
C18	10	100	100	8	1	070B32Y805
C8	5	100	100	8	1	070B32Y802
C8	10	100	100	8	1	070B32Y804
SIL	5	100	100	8	1	070B32Y801
SIL	10	100	100	8	1	070B32Y810
NH2	5	100	100	8	1	070B32Y807
C4	5	100	100	8	1	070B32Y817
C18	5	100	150	8	1	070B22Y803
C18	10	100	150	8	1	070B22Y805
C8	5	100	150	8	1	070B22Y802
C8	10	100	150	8	1	070B22Y804
SIL	5	100	150	8	1	070B22Y801
SIL	10	100	150	8	1	070B22Y810
NH2	5	100	150	8	1	070B22Y807
C4	5	100	150	8	1	070B22Y817
C18	5	100	250	8	1	070B23Y803
C18	10	100	250	8	1	070B23Y805
C8	5	100	250	8	1	070B23Y802
C8	10	100	250	8	1	070B23Y804
SIL	5	100	250	8	1	070B23Y801
SIL	10	100	250	8	1	070B23Y810
NH2	5	100	250	8	1	070B23Y807
C4	5	100	250	8	1	070B23Y817

KromaPhase Columns 16mm I.D. SCHARLAU

Phase	Particle size (µm)	Porus size (Å)	Length (mm)	Ø internal (mm)	Pack (u.)	Art. No.
C18	5	100	150	16	1	070B44Y803
C18	10	100	150	16	1	070B44Y805
C8	5	100	150	16	1	070B44Y802
C8	10	100	150	16	1	070B44Y804
SIL	5	100	150	16	1	070B44Y801
SIL	10	100	150	16	1	070B44Y810
NH2	5	100	150	16	1	070B44Y807
C4	5	100	150	16	1	070B44Y817
C18	5	100	250	16	1	070B27Y803
C18	10	100	250	16	1	070B27Y805
C8	5	100	250	16	1	070B27Y802
C8	10	100	250	16	1	070B27Y804
SIL	5	100	250	16	1	070B27Y801
SIL	10	100	250	16	1	070B27Y810
NH2	5	100	250	16	1	070B27Y807
C4	5	100	250	16	1	070B27Y817

→ Continued on the next page

Visit our new web www.scharlab.com

KromaPhase Columns 20mm I.D. SCHARLAU

Phase	Particle size (µm)	Porus size (Å)	Length (mm)	Ø internal (mm)	Pack (u.)	Art. No.
C18	5	100	150	20	1	070B11Y803
C18	10	100	150	20	1	070B11Y805
C8	5	100	150	20	1	070B11Y802
C8	10	100	150	20	1	070B11Y804
SIL	5	100	150	20	1	070B11Y801
SIL	10	100	150	20	1	070B11Y810
NH2	5	100	150	20	1	070B11Y807
C4	5	100	150	20	1	070B11Y817
C18	5	100	250	20	1	070B10Y803
C18	10	100	250	20	1	070B10Y805
C8	5	100	250	20	1	070B10Y802
C8	10	100	250	20	1	070B10Y804
SIL	5	100	250	20	1	070B10Y801
SIL	10	100	250	20	1	070B10Y810
NH2	5	100	250	20	1	070B10Y807
C4	5	100	250	20	1	070B10Y817

→ Continued on the next page

For further information, please contact scharlab@scharlab.com

Multisolvent®

One solution... so many applications!

*The wise choice*

Optimise your costs and stocks · Simplify your purchase
 Guaranteed your results · It avoids errors in your laboratory
 Increases the safety in your laboratory